

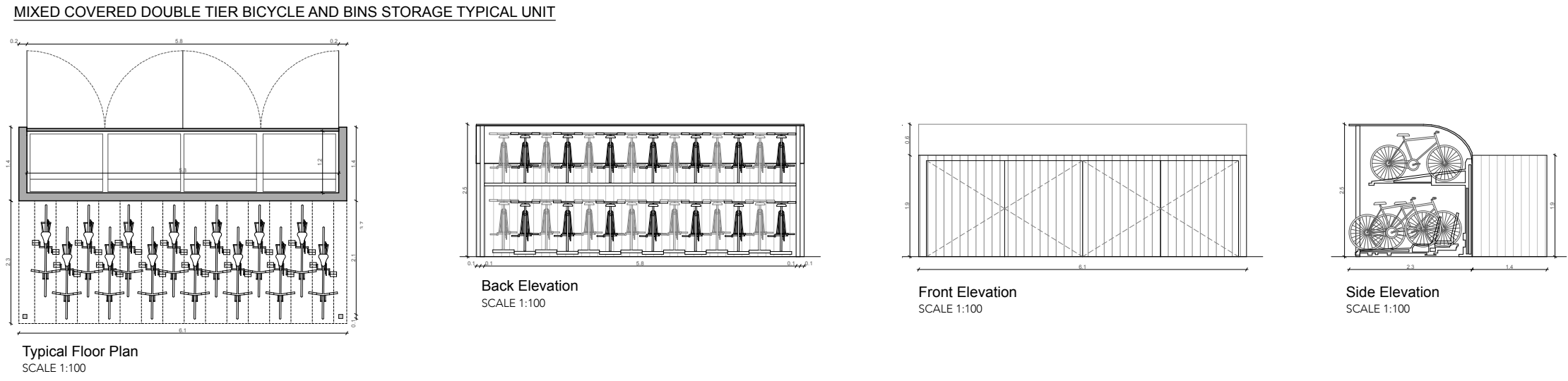
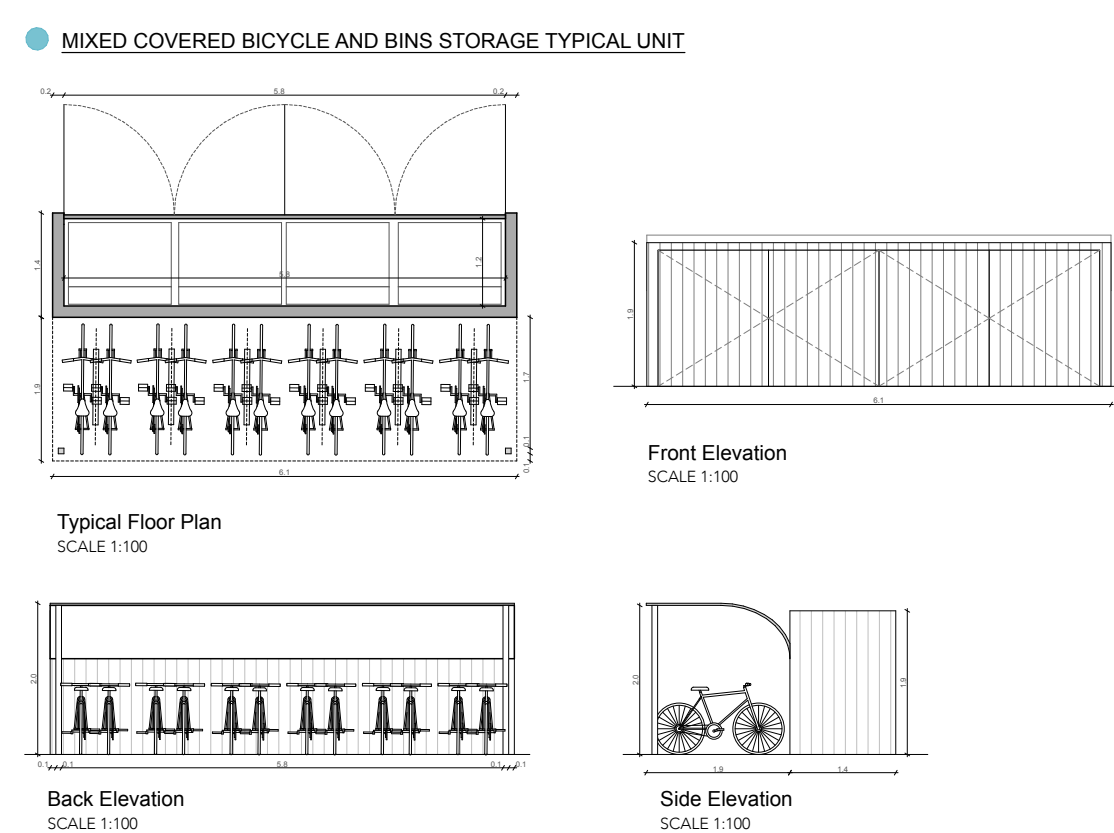
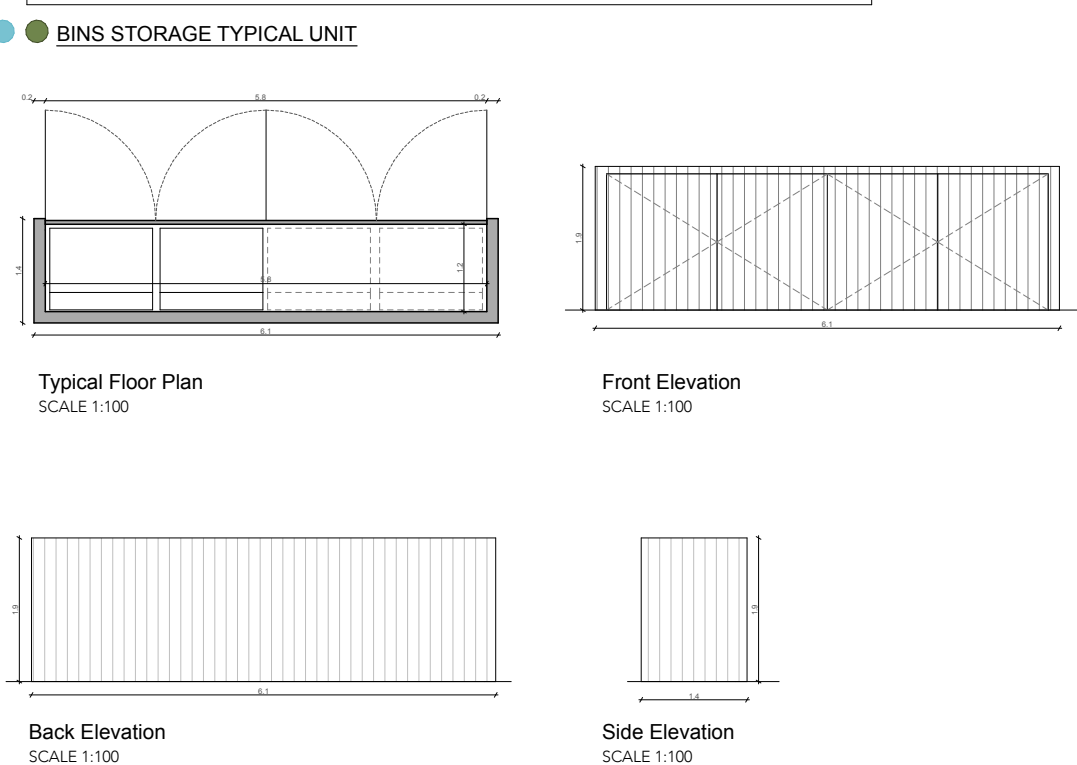
LEGEND

- SITE BOUNDARY
- LANDS ON THE OWNERSHIP OF THE APPLICANT
- EXISTING PYLON CORRIDOR WAY LEAVE

BICYCLE AND BINS STORAGE UNITS

- Storage units are the back garden through side entrance
- Bins storage unit on curtilage/amenity space - See architects and landscape architects site layout for more detail on exact location
- Apartment blocks - Bins storage provided in the floor plan of the building. See individual blocks drawings for more detail
- Apartment blocks - External bin storage units - See units and landscape drawings for more detail
- Storage unit for the creche
- Communal bin storage units - located in amenity and communal open space. See 1:500 site layout drawings for more details as well as landscape architect drawings.

Communal bin storage - TYPICAL UNITS
See 1:500 Site Layout for more detail on exact location as well as Landscape architect drawings



RIAI **PLANNING APPLICATION**

DAVEY + SMITH ARCHITECTS

DAVEY + SMITH ARCHITECTS UNH 13, THE SEAPONT BUILDING, 44-45 CLONTARF ROAD, CLONTARF, DUBLIN 3 | PH: 01 2447638 | EMAIL: info@davey-smith.com | WEB: www.davey-smith.com

Layout ID: 2205-MP23-

Project: LRD - Development at Oldcourt

Drawing Name: Overall Lands - Proposed Bins Location

Scale: 1:1500, 1:100, 1:200

Job No: 2205

Series: PLANNING APPLICATION

Date: 11/09/2024

Status:

THIS DRAWING TO BE READ IN CONJUNCTION WITH RELEVANT CONSULTANTS DRAWINGS. NOTIFY ARCHITECTS OF ANY DISCREPANCIES. CHECK DIMENSIONS ON SITE. USE FIGURE DIMENSIONS ONLY. COPYRIGHT RESERVED FOR DAVEY & SMITH ARCHITECTS LTD.